



Connection between Emission and Absorption Outflows through the Study of Quasars with Extremely High Velocity Outflows

Paola Rodríguez Hidalgo¹ and Amy L. Rankine² ¹Physical Sciences Division—School of STEM, University of Washington Bothell, Bothell, WA 98011, USA; paola@uw.edu²Institute for Astronomy, University of Edinburgh Royal Observatory, Blackford Hill Edinburgh, EH9 3HJ, UK

Received 2022 September 3; revised 2022 September 14; accepted 2022 September 26; published 2022 November 3

Abstract

A recently discovered class of outflows, extremely high velocity outflows (EHVOs), may be key to understanding feedback processes, as it is likely the most powerful in terms of mass energy. These EHVOs have been observed at redshifts $1.052 < z_{\text{em}} < 7.641$, but the potential connection with outflows in emission has not been studied. We find that EHVOs, albeit their small numbers at the moment, appear to show distinct C IV and He II properties. In particular, EHVOs are more predominant in quasars with large blueshifts of the C IV emission line, suggesting a connection between emission and absorption outflowing signatures for these extreme outflows. We also find incipient trends with the maximum velocity of the outflows, which is similar to what has been previously found in BALQSOs but now extending previous studies to speeds up to $\sim 0.2c$. We find that the bolometric luminosities, Eddington ratios, and black hole masses of our sample are overall very similar to the general quasar population upon considering their C IV emission properties. This is close to the case for He II EW, as we observe a tentative upper limit to the He II strength for a quasar to host an EHVO. This study shows that extreme outflows such as EHVOs appear in quasars that are clearly a distinct class from the overall BALQSO population and solidify the relation between outflows observed in emission and absorption.

Unified Astronomy Thesaurus concepts: Quasars (1319); Active galactic nuclei (16); Broad-absorption line quasar (183); Quasar absorption line spectroscopy (1317)

1. Introduction

Quasars, the most luminous of the active galactic nuclei (AGNs), are found at the center of the most massive galaxies (e.g., Lynden-Bell 1969; Bahcall et al. 1997). Quasars' large luminosities allow us to study them at large redshifts, providing information about galactic evolution within our universe.

Outflows are fundamental constituents of AGNs, and they provide firsthand information about the physical and chemical properties of the AGN environment. They are studied in emission through the analysis of the blueshift of emission lines (e.g., Komossa et al. 2015; Marziani et al. 2017) and through absorption line signatures (e.g., broad, blueshifted resonance lines in the UV and X-ray bands) as the gas intercepts some of the light from the central continuum source and broad emission line region (e.g., Crenshaw et al. 1999; Reichard et al. 2003; Hamann & Sabra 2004; Trump et al. 2006; Dunn et al. 2008; Ganguly & Brotherton 2008; Nestor et al. 2008 and references therein). Outflows have been invoked as a potentially regulating mechanism that would provide the necessary energy and momentum “feedback” (e.g., Silk & Rees 1998; Di Matteo et al. 2005; Springel et al. 2005; Hopkins et al. 2006) required to explain the correlation between the black hole masses (M_{BH}) and the masses of the stellar spheroids (M_{bulge}) of their host galaxies (e.g., Gebhardt et al. 2000; Merritt & Ferrarese 2001; Tremaine et al. 2002).

Outflows at large speeds are likely to be the most effective way of transporting energy from the AGN to galactic scales, therefore having more influence on the formation and

destruction of galactic structures (Silk & Rees 1998; Scannapieco & Oh 2004; Hopkins et al. 2006). Outflows with speeds $v \sim 0.2c$ may carry kinetic power 1–2.5 orders of magnitude larger than that of gas outflowing at what is defined as “high” velocities ($v \sim 5000\text{--}10,000 \text{ km s}^{-1}$), assuming similar distances from the inner source and similar physical properties of the gas, because kinetic power is proportional to v^3 . Such outflows have been detected both in X-ray and in UV/optical spectra. In the X-rays, the so-called ultrafast outflows (UFOs) have been observed as Fe K-shell absorption in the X-ray spectra of nearby AGNs (predominantly Seyferts) at speeds similar to and even larger than those in extremely high velocity outflows (EHVOs; $0.03c\text{--}0.4c$; e.g., Chartas et al. 2002; Reeves et al. 2003; Tombesi et al. 2010). However, UFOs have rarely been detected in high- z quasars; there are just over 10 cases with $z_{\text{em}} > 1.5$ to date. A systematic study of UFOs at large redshifts is prohibitive at the moment.

The number of known UV/optical broad (FWHM $\gtrsim 1000 \text{ km s}^{-1}$) EHVOs in quasar spectra has exploded in the last 2 yr, from only a handful of cases in previous years (Jannuzi et al. 1996; Hamann et al. 1997; Rodríguez Hidalgo et al. 2011; Rogerson et al. 2016) to more than 150 new cases. We have discovered 138 of these new cases at $1.9 < z \lesssim 4.5$: 40 cases (Rodríguez Hidalgo et al. 2020) in the ninth release of the Sloan Digital Sky Survey (SDSS) quasar catalog (DR9Q; Pâris et al. 2012) and 98 new cases (P. Rodríguez Hidalgo et al. 2022, in preparation) in the DR16Q (Lyke et al. 2020). As it is common practice in surveys of BALQSOs (e.g., Gibson et al. 2009), we used the presence of C IV $\lambda\lambda 1548.1950, 1550.7700$ absorption that appears blueshifted relative to the C IV emission to identify the EHVO. Among different ionic transitions, C IV is (1) commonly present in quasar outflows and (2) easily observed due to the fact that it is redshifted into the optical range for quasars in the epoch of peak quasar

activity (for luminous type 1 quasars, the comoving space density peaked at redshifts $2 < z_{\text{em}} < 3$; Schmidt et al. 1995; Ross et al. 2013 and references therein). Prior surveys of C IV BALQSOs had set an arbitrary upper velocity limit of $0.1c$ to avoid complications due to misidentification with Si IV and other ionic transitions blueward of the Si IV emission line, but we have developed a method that flags all absorption in the spectral region of interest and allows the user to visually inspect the spectrum easily to help identify the right C IV transitions, rejecting or including the flagged candidate as a confirmed EHVO case. Narrow ($\text{FWHM} \lesssim 500 \text{ km s}^{-1}$) EHVOs have also been studied in statistical studies (e.g., Nestor et al. 2008; Chen et al. 2021), where properties like line locking or correlations with the presence of other outflows suggest an intrinsic nature.

The connection between emission and absorption outflows at these extreme speeds is completely unknown, but there are previous studies in BALs at lower speeds. Using the data in DR7, Richards et al. (2011) found a relationship between C IV emission line properties and whether there was absorption present in quasar spectra by studying a sample of $\sim 30,000$ quasar spectra. They found a dearth of BALQSOs, which were defined as having broad absorption at speeds up to $20,000 \text{ km s}^{-1}$, in quasars that show C IV emission lines with small blueshifts and large equivalent widths (EWs). Most recently, Rankine et al. (2020) extended this work to 144,000 quasars in SDSS DR14Q and studied the effects of BAL properties. We found that the balnicity index (BI; Weymann et al. 1991) and other BAL trough parameters, including the maximum and minimum trough velocities, all increase as the C IV blueshift increases. Also of note is the finding that BAL and non-BAL quasars occupy the same C IV emission space apart from the region of highest EW and low blueshifts, where there are few BALQSOs. The fraction of quasars that have BALs, however, changes across the space with the highest BAL fraction occurring at the highest blueshifts. Quasars with similar C IV emission profiles were found to have similar optical luminosities, Eddington ratios, and, most notably, He II $\lambda 1640$ EW, which is an indicator of the strength of the ionizing spectral energy distribution (SED; Leighly 2004). Other studies have also found the EW of He II to anticorrelate with the C IV emission blueshift (Baskin et al. 2013, 2015), and Rivera et al. (2022) has shown that the He II EW is linearly anticorrelated with C IV distance, a metric describing the distance along a best-fit curve through the C IV space. Values of C IV distance are zero at high EW and low blueshift, and they increase toward unity along the best-fit curve as we move toward low EW and high blueshift. The best-fit curve was constructed by McCaffrey & Richards (2021) with piecewise polynomial fitting to the Rankine et al. (2020) sample. Each quasar can then be projected onto the best-fit line, and a C IV distance value is assigned. This metric was first introduced by Rivera et al. (2020) to better explore the variability of the SDSS reverberation mapping quasars (Shen et al. 2015) and Richards et al. (2021) to investigate radio trends in C IV space. Rivera et al. (2022) suggested that C IV distance can be used as a proxy for the Eddington ratio, so the He II EW (thus the SED hardness) is anticorrelated with the Eddington ratio.

However, both Richards et al. (2011) and Rankine et al. (2020) were limited to absorption outflowing up to speeds of $20,000\text{--}25,000 \text{ km s}^{-1}$, as most BALQSO studies are. The EHVOs present a test of any trend found in BALQSOs, as we

can triple the range of speeds we can study up to $60,000 \text{ km s}^{-1}$.

In this paper, we study whether there is a connection between outflows in C IV emission and extreme outflows found in absorption as EHVOs. In Section 2, we discuss the origin of the known properties we cross-correlate, and in Section 3, we study potential connections between C IV outflows in absorption and emission by studying the relation between the properties of emission lines and our measured properties of EHVOs, as well as contrasting EHVOs in relation to BALQSOs. We discuss their implications in Section 4.

2. Data

The data on the 40 DR9Q EHVO quasars were published in Rodríguez Hidalgo et al. (2020, hereafter RH+2020), where we selected quasars with $z_{\text{em}} \geq 1.9$ and a signal-to-noise ratio (S/N) larger than 10 and removed cases without sufficient wavelength coverage in the region of interest, resulting in a parent sample of 6743 quasars. The spectra were then normalized, and we systematically searched for EHVO absorption.

The measurements of C IV emission line blueshifts and EWs, as well as He II EWs, used in this paper were found as part of the analyses of Rankine et al. (2020, hereafter Rankine+2020). We produced spectrum reconstructions covering rest frame $1260\text{--}3000 \text{ \AA}$ generated by a mean field independent component analysis (ICA) of a selection of 144,000 quasars in the DR14Q (Pâris et al. 2018) with $1.5 \lesssim z_{\text{em}} \leq 3.5$, $45.3 < \log_{10}(L_{\text{bol}}) < 48.2 \text{ erg s}^{-1}$, and spectra with an average $S/N \geq 5.0$ per SDSS spectrum pixel. The reconstructions allow for measurements of the intrinsic C IV emission to be made even in the presence of extensive absorption in BAL quasars and also reduce the uncertainty in these measurements in low-S/N spectra by using the information across the entire spectrum to inform the reconstruction. Use of the reconstructions and the nonparametric nature of this procedure remove the requirement to fit Gaussian profiles to the spectra. We refer the reader to Section 6.1 of Rankine+2020 for a detailed description, but, in summary, calculation of the C IV emission line parameters followed a nonparametric approach. First, a power-law continuum was subtracted from the reconstruction, then the emission line flux was integrated to determine EW, and the blueshift was calculated from the wavelength that bisects the total cumulative line flux relative to the systemic velocity of the quasar.

We cross-correlated these two samples using the observation information, namely, plate-mjd-fiber, to study where EHVOs lie in the C IV blueshift–EW parameter space. The redshift cutoff in Rankine+2020³ only excludes 3% of our parent sample (215/6743) but 20% (8/40) of our quasars with EHVOs; this was expected, as EHVOs seem to be more predominant at higher redshifts (Wang et al. 2018; RH+2020;

³ Systemic redshifts were calculated using an ICA of the $1600\text{--}3000 \text{ \AA}$ rest-frame wavelength region (Allen et al. 2013) with redshift as a free parameter. See Rankine+2020 for an in-depth description, but in summary, the $1600\text{--}3000 \text{ \AA}$ region is chosen deliberately to involve low- as opposed to high-ionization lines and thereby exclude the often-blueshifted C IV emission line, which can bias the redshifts by $>1000 \text{ km s}^{-1}$ for the highest C IV blueshift sources. Indeed, the ICA-based redshifts are much more consistent with the redshifts of Wu & Shen (2022) for SDSS DR16 than the original SDSS redshifts. We use these ICA redshifts to recalculate EHVO speeds so that they are slightly different than in RH+2020; however, we note that our results do not change qualitatively if we use the EHVO speeds from RH+2020.

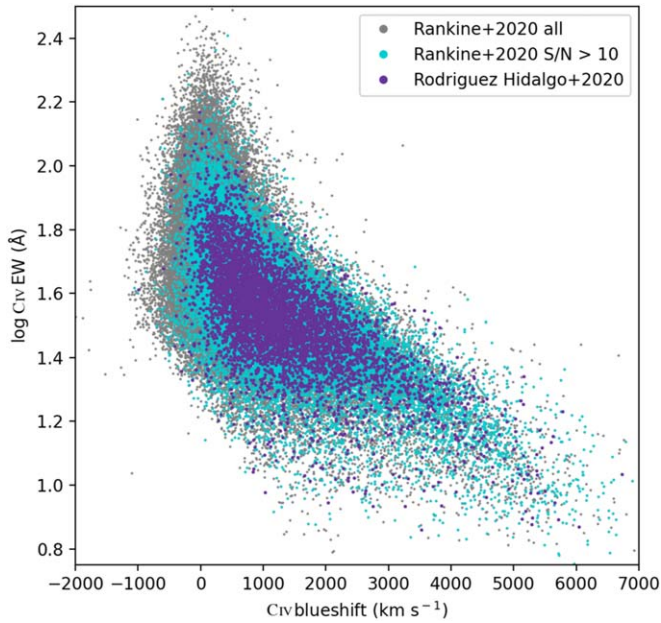


Figure 1. Comparison of Rankine et al. (2020) and RH+2020 samples in the studied parameter space. The lack of overlap in the top left quadrant is due to the different S/Ns in both samples, but it is reduced once we establish the same cutoff.

Wang et al. 2021; Bischetti et al. 2022). We contrasted the parent samples to make sure that the differences between them would not affect our study. We observed that the largest difference was due to the cutoffs in S/N: average $S/N \geq 5.0$ in Rankine+2020 versus $S/N > 10$ in RH+2020. Once we apply the same cutoff in Rankine+2020’s sample, both samples mostly overlap (see Figure 1). Together with the restriction of good spectrum reconstructions with reduced $\chi^2 < 2$ and excluding the lower left corner of C IV space, which contains mostly intrinsically pathological spectra and FeLoBALs for which the ICA reconstruction scheme is not designed (details in Section 4.3 of Rankine+2020), the parent sample in Rankine+2020 is reduced to 41,535 quasars (aqua in Figure 1), the parent sample in RH+2020 to 5730 quasars (dark blue in Figure 1), and the number of EHVO quasars to 31. The resulting luminosity range in Rankine+2020 is similar to that for the parent sample in RH+2020. Measurements of bolometric luminosity (L_{bol}), black hole mass (M_{BH}), and Eddington rate (L_{bol}/L_{Edd}) were also taken from Rankine+2020. Only values of M_{BH} , and therefore also L_{bol}/L_{Edd} , calculated for cases with C IV blueshift $> 500 \text{ km s}^{-1}$ are included because the correction to take into account the excess nonvirial blue emission for quasars with large C IV blueshifts (Coatman et al. 2017) is not well defined for cases with negative or modest positive blueshifts. See Section 6.3 in Rankine+2020 for more information.

We also use the He II properties from Rankine+2020 to compare the SEDs of the EHVOs to the parent sample in C IV space and with C IV distance by employing the CIV-distance code by McCaffrey & Richards (2021) to project our sample onto the curve and measure the C IV distance.

In our analysis, we also contrast quasars with EHVOs to BALQSOs. The latter were defined slightly differently in both samples. For simplicity, we use the definition in Rankine+2020: a BI in C IV larger than zero. BALQSOs in this sample show C IV absorption with speeds up to 25000 km s^{-1} .

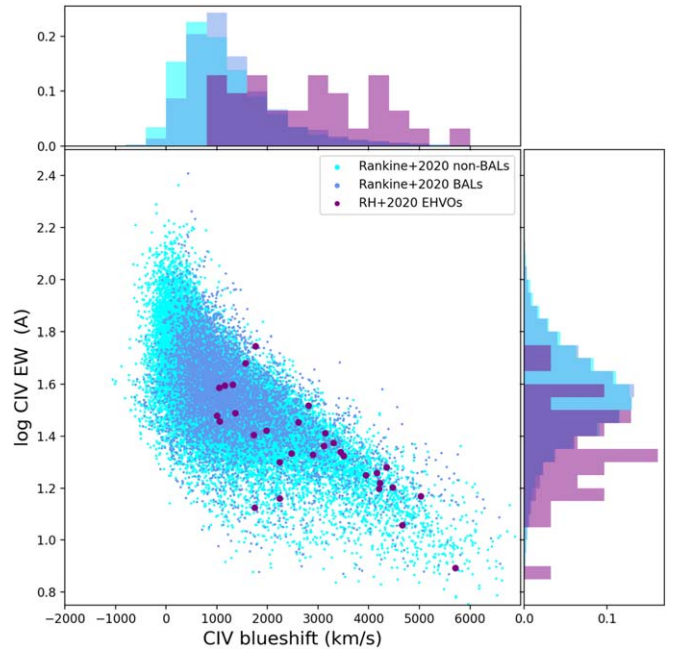


Figure 2. The scatter plot shows non-BALs (aqua), BALs (light blue; both from Rankine+2020), and EHVOs from RH+2020 (purple) in the C IV emission line blueshift and EW parameter space. A progression toward larger blueshifts and smaller EWs is shown from the samples of non-BALs and BALs toward the EHVOs.

3. Results

In Figure 2, we show that EHVOs (purple; from RH+2020) appear clearly in quasar spectra with larger values of blueshift and smaller values of EW of the C IV emission line than the other two populations, namely, non-BALQSOs (aqua) and BALQSOs (light blue), both from Rankine+2020.

While our number of cases in each sample differs by orders of magnitude (35,694 non-BALs and 5841 BAL quasars in Rankine+2020 and 31 EHVO quasars in RH+2020), the distributions of C IV emission line properties differ largely. It is implausible that 31 cases selected randomly from either of the other two distributions would result in that same distribution. We performed Kolmogorov–Smirnov (K-S) tests between the distribution of C IV blueshift values in the parent samples, the non-BALQSOs, and the BALQSOs versus the EHVO sample, obtaining p -values smaller than $1e-08$ for all of the tests with K-S statistic values larger than 0.5, therefore rejecting the hypothesis that the values for EHVO come from any of the other distributions. We also tried selecting 10,000 times a random sample of 31 quasars from each of the comparison distributions and counted how many times the median of this selection would be equal to or larger than the median of the EHVO C IV blueshift values; we obtained zero for all cases.

In Figure 3, we examine the relationship between minimum and maximum velocities in C IV emission space against a backdrop of the BI-defined BALQSO trough parameters from Rankine+2020. Rankine+2020 found the minimum and maximum BAL velocities to correlate with C IV blueshift (see also Rankine+2020’s Figure 16). Particularly noticeable from both panels is that the EHVOs, which by definition have large V_{min} and V_{max} , occupy the same region of C IV space where the BALQSOs also have large V_{min} and V_{max} , both EHVOs and BALQSOs showing C IV blueshifts $\gtrsim 1000 \text{ km s}^{-1}$. Looking now at the specific EHVO velocities, the minimum EHVO

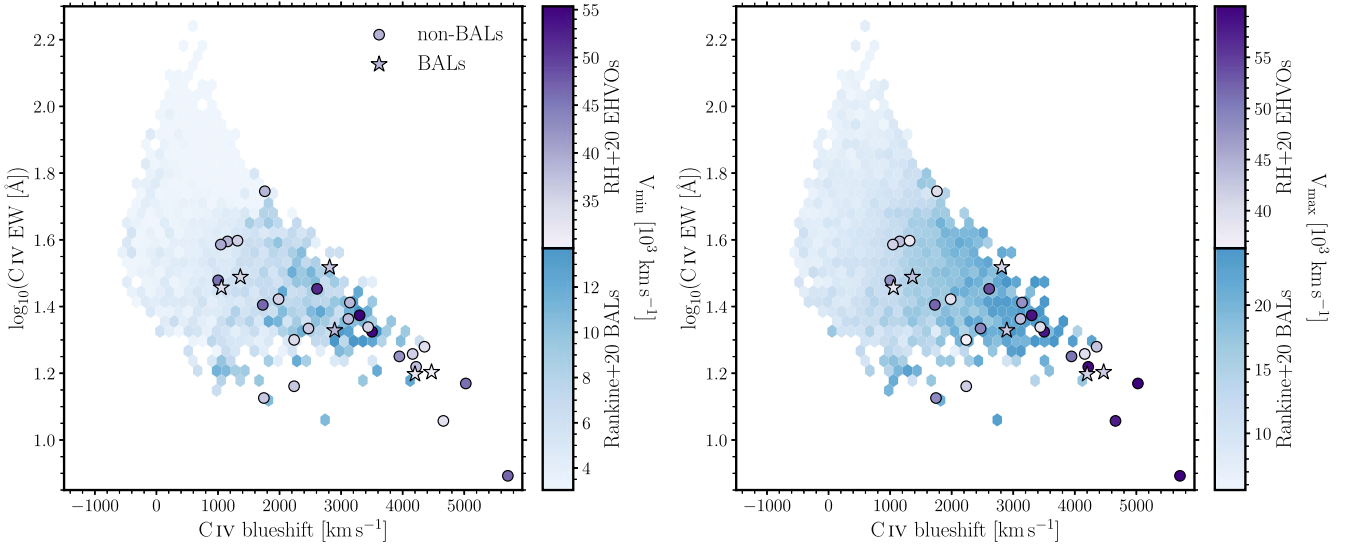


Figure 3. The C IV emission space color-coded by minimum (left) and maximum (right) velocities of the Rankine+2020 BALs (blue hexagons) and EHVOs (purple circles). Note that, due to the definition of an EHVO, the minimum and maximum EHVO velocities are significantly greater than their BAL counterparts to warrant separate color maps in order for any trends to be visible. The EHVO sample is split into BALs (stars) and non-BALs (circles). The hexagonal binning is a reproduction of Rankine+2020’s Figure 16; the median velocities of the objects within each hexagon are calculated, and only hexagons with five or more objects are plotted. The BAL minimum and maximum velocities both clearly increase with increasing C IV blueshift. The maximum EHVO velocity also appears to increase; however, the minimum EHVO velocity shows no such trend. Notice also that EHVOs seem to occupy the same parameter space as BALs with speeds in the upper half ($V_{\max} \gtrsim 15,000 \text{ km s}^{-1}$).

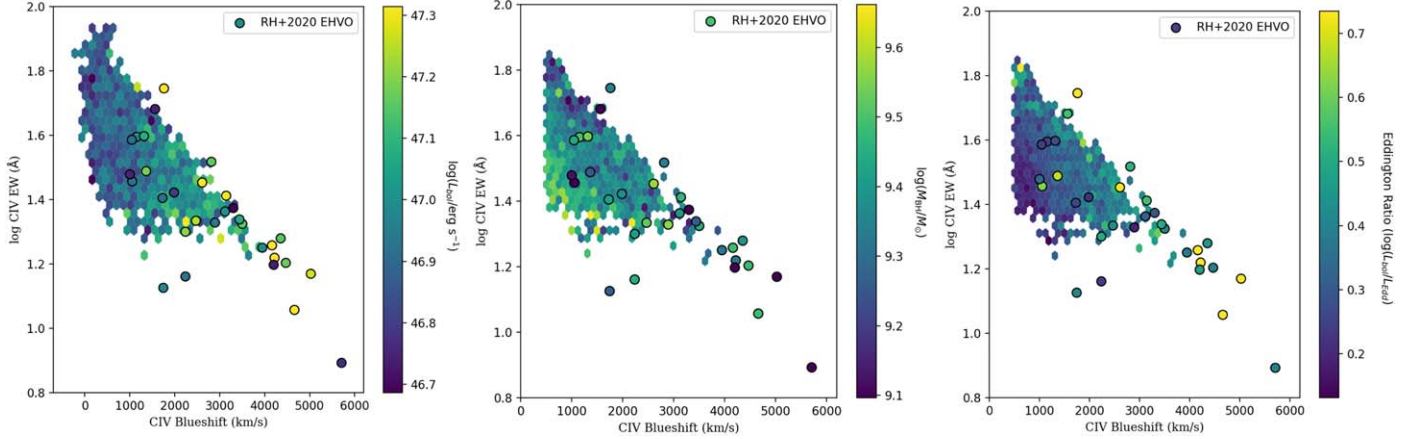


Figure 4. The C IV emission space color-coded by minimum to maximum values of bolometric luminosity (left), black hole mass (middle), and Eddington ratio (right) for both the DR9Q parent sample (hexagons) and EHVOs (circles). The hexagonal binning is modified due to the smaller numbers in the parent sample relative to Rankine+2020; the median values of the objects within each hexagon are calculated, and only hexagons with four or more objects are plotted. Notice that the values of black hole mass, and therefore Eddington ratio, are only included for cases with C IV blueshift $>500 \text{ km s}^{-1}$ because the correction used here and described in Coatman et al. (2017) is not well defined for cases with negative or modest positive blueshifts (see Section 2 for information about measurements). Except for some outliers, most EHVOs are not distinguishable from the parent sample based on these three properties.

velocity does not appear to show any trend with C IV blueshift. Note that the BALQSOs with EHVOs have absorption present at lower velocities that is not included in the calculation of V_{\min} and subsequent color-coding of the stars in the left panel of the figure. The seven BAL quasars in the EHVO sample have BAL minimum velocities greater than 11000 km s^{-1} , which is consistent with their location in C IV space. Due to the small sample size, there is only a tentative trend of increasing maximum EHVO velocity with increasing C IV blueshift. If confirmed, this trend would be in agreement with the BALQSOs, only at much greater velocities as a result of the BAL and EHVO definitions. Extending this work to the DR16 sample will hopefully provide such a clarification.

Figure 4 shows the studied C IV emission space for the parent and EHVO samples as a function of values of L_{bol} (left),

M_{BH} (middle), and $L_{\text{bol}}/L_{\text{Edd}}$ (right). Except for some outliers, it does not seem that the overall values of these three physical properties are significantly distinct for EHVOs relative to the parent sample in the C IV emission space; in other words, while EHVOs show larger values of L_{bol} and $L_{\text{bol}}/L_{\text{Edd}}$ overall (see Section 4), they do not have different values of L_{bol} , M_{BH} , and $L_{\text{bol}}/L_{\text{Edd}}$ than the values expected for a quasar with those C IV emission line properties.

Figure 5 shows our analysis of He II EWs in EHVOs. Figure 5 (left) contains the C IV space color-coded by the He II EW for the EHVO and parent samples. In a similar manner to the bolometric luminosity, Eddington ratio, and black hole mass, the He II EWs of the EHVOs are consistent with the parent sample and determined by their location in C IV space. There is a subtle suggestion that the EHVOs with the largest

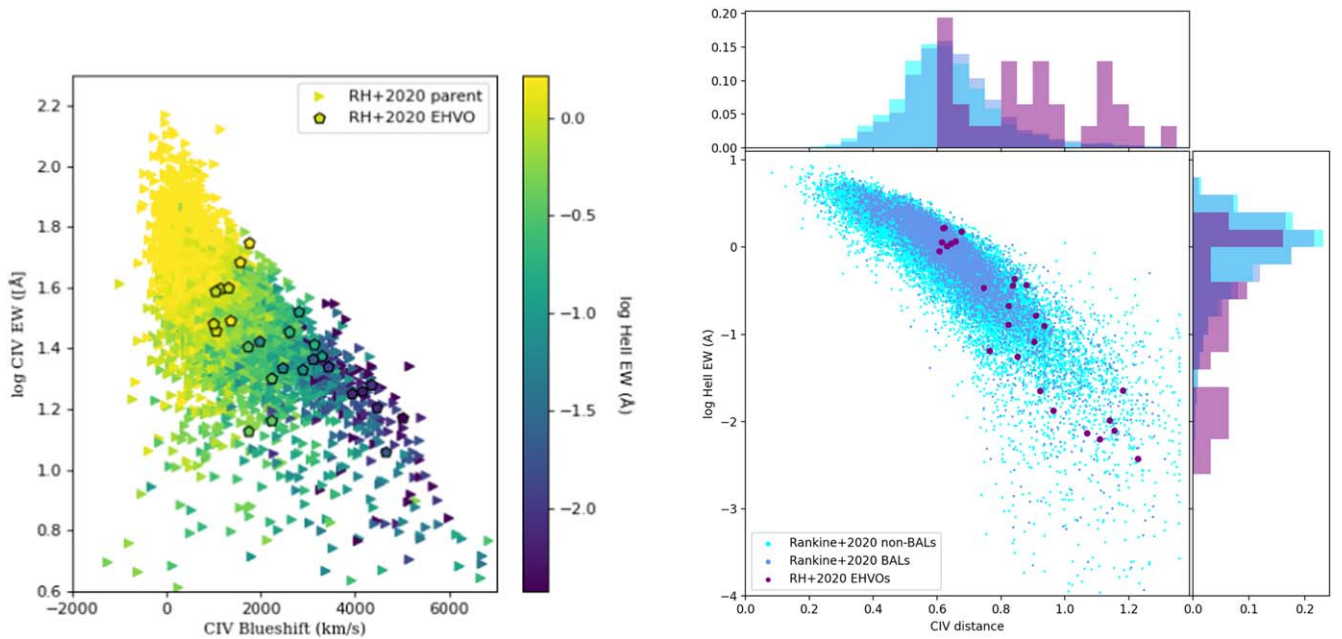


Figure 5. Left: C IV emission space color-coded by He II EW. In agreement with the parent sample, the EHVO He II EW decreases as C IV blueshift increases and EW decreases. The EHVOs with the largest He II EWs have perhaps too-strong He II for their location in C IV space. Right: He II EW against C IV distance. The EHVO quasars are shifted to the bottom right compared to the BALs and non-BALQSOs, while the EHVOs with the highest He II EWs appear to be at the limit of allowed He II values.

C IV EWs have perhaps slightly higher He II EWs than would be expected based on their location in C IV space. To assess this further, we reduce the dimensionality by plotting the He II EW as a function of the C IV distance in the right panel of Figure 5. The C IV distance has been shown to anticorrelate almost linearly with the He II EW (Rivera et al. 2022), so we can use this metric to examine trends in C IV space more simply. The EHVO sample is clearly shifted to large C IV distances and lower He II EW; however, from this figure, one can also see a cluster of EHVOs around a C IV distance of 0.7 that have significant He II emission. The two EHVOs with the largest He II EW ($\sim 3 \text{ \AA}$) in our sample have He II emission that is as strong as appears to be allowed for their C IV distance values based on the parent population. Studies with larger samples of EHVOs will facilitate further investigation of this possible phenomenon.

4. Discussion

The literature is only sparsely populated with investigations connecting the outflows observed in absorption with those in emission at intermediate redshifts, primarily because parameterizing the C IV emission outflow signature is challenging in quasars with extensive C IV absorption. For example, Richards et al. (2011) used the blueshifted C III] complex as a proxy for C IV blueshift; however, we were able to measure the C IV emission directly with the help of our ICA reconstruction scheme in Rankine+2020. Now, with these measurements, we have connected the emission outflow signatures with the EHVOs observed in absorption.

Rankine+2020 already showed that, except for the top left quadrant of the C IV emission space, BALQSOs and non-BALQSOs share a large range of the parameter space; in other words, most emission line properties of BALQSOs are indistinguishable from non-BALQSOs. This is not entirely surprising, as broad absorption has been found to be variable,

and it can emerge (i.e., Hamann et al. 2008) and disappear (Filiz et al. 2012) in quasar spectra. Quasars with EHVOs, on the other hand, populate the bottom right quadrant of the C IV space, showing the largest C IV blueshifts; their distinct C IV emission line profiles suggest that EHVOs may be a distinct class of quasars or a natural progression from BALQSOs as the speeds increase. In fact, BALQSOs with large speeds ($V_{\max} \gtrsim 15,000 \text{ km s}^{-1}$) and EHVOs show similar properties in the C IV emission space, which suggests that the arbitrary cutoff at $0.1c$ due to the presence of Si IV + O IV] emission should be reconsidered: either placed around $\sim 0.05c$, or the properties might change gradually as the velocity increases. Many quasars that show EHVOs also include outflows in the $\sim 0.05c$ - $0.1c$ velocity range. As described in RH+2020, absorption on top of the emission line complex is difficult to confirm, but reconstructions such as those in Rankine+2020 are very promising to increase the number of EHVOs known in this region. Also, more studies comparing the properties of EHVOs and those of BALQSOs with large speeds will help us learn whether EHVOs are a distinct class or an extension of large-speed BALQSOs.

Rankine+2020 showed a correlation between values of bolometric luminosity, Eddington ratio, BALQSOs' speeds, and C IV blueshifts. Finding that EHVOs occupy the parameter space with the largest C IV blueshifts, we expected that they would also show correlations with these parameters. In RH+2020, we had already found that EHVOs tend to have slightly larger bolometric luminosities, which we also find here, but we did not observe the originally largest values of the Eddington ratios. After investigating the different prescriptions to calculate black hole mass (Shen et al. 2011⁴; Rankine+2020), we find that measurements that do not take into account the excess nonvirial blue emission for quasars with

⁴ The M_{BH} values from Shen et al. (2011) were used in the DR9Q EHVOs in RH+2020.

large C IV blueshifts can be largely overestimated at large values (Coatman et al. 2017). Using Rankine+2020, we find more moderate values of black hole mass in EHVOs with an overall smaller spread. This results in a correlation between L_{bol} and Eddington ratio for EHVOs, which also show some of the largest values of these two properties (yellow and light green circles in Figure 4). Quasars at large redshift ($z > 5.8$; Bischetti et al. 2022) also seem to have larger values of Eddington ratios. Our results confirm the increase of subrelativistic accretion disk winds with increasing Eddington ratios predicted by Giustini & Proga (2019). While our study remains on the low end of the super-Eddington regime, Giustini & Proga (2019) predicted more polar jets, which would be interesting to explore in the EHVO cases with large Eddington ratios.

The dearth of BALQSOs in the top left quadrant (or with the lowest C IV distances) correlates with stronger He II $\lambda 1640.42$ emission lines. The He II is stronger for harder SEDs (Casebeer et al. 2006), which result in weaker winds because the gas may be too ionized for radiation line driving to be efficient due to the electrons no longer being bound to the nuclei. Indeed, Richards et al. (2011) and Baskin et al. (2015) already showed that BAL-type quasars have typically weaker He II emission in their composite spectra. However, Rankine+2020 suggested that for a given quasar, the location in C IV emission space is more important for determining the quasar’s properties, such as bolometric luminosity, Eddington ratio, and strength of the ionizing SED, than whether or not the quasar is a BALQSO. Our results further this conclusion, as we find that the location in C IV space is more important for determining the bolometric luminosity, Eddington ratio, and black hole mass than the presence of fast EHVOs, as their values for the EHVO sample are consistent with both the non-BAL and BALQSOs. The He II emission is close to indistinguishable from the parent population; however, the suspected limit on He II EW for the presence of EHVOs suggests that there is an SED hardness above which EHVOs cannot be driven. This is in contrast to BALQSOs, which can have He II EWs higher than this limit, although larger EHVO samples are needed to confirm this. We also find that the V_{max} values for EHVOs show an incipient trend in the C IV emission space toward larger C IV blueshifts, as BALQSOs show, but it needs to be confirmed by enlarging the sample.

5. Conclusions

We have examined the continuum and emission line properties, namely, C IV and He II, bolometric luminosities, Eddington ratios, and black hole masses, of a sample of 31 quasars with EHVOs and considered these properties in the context of the quasar population as a whole. A summary of our findings is as follows.

1. Typically, EHVOs are hosted by quasars found in the lower right quadrant of C IV space, with large blueshifts and low EWs (Figure 2), both more extreme than the average values for all non-BALQSOs and BALQSOs but similar to those BALQSOs with large speeds.
2. The small sample size deters us from making any substantial claims about velocity trends; however, the maximum EHVO velocity increases with increasing C IV blueshift, consistent with the trends found in the

BALQSOs. The minimum velocity, on the other hand, shows no such trend (Figure 3).

3. The bolometric luminosities, black hole masses, and Eddington ratios of our EHVO sample are very similar to the corresponding values of other quasars in the parent sample in the same portion of the C IV emission line parameter space (Figure 4). Bolometric luminosities and Eddington ratios appear to be on the slightly larger realm of the parameter space, similar to what occurs for high- z quasars.
4. The He II EWs, an indicator of the strength of the ionizing SEDs, of the EHVO sample are close to identical to the parent sample given their location in C IV space; however, there is the suggestion that there is an upper limit of He II strength and therefore SED hardness for a quasar to host an EHVO (Figure 5).

With new samples of EHVO quasars (for example, DR16Q; P. Rodríguez Hidalgo et al. 2022, in preparation), we will be able to improve the statistics of the trends we have discovered with EHVO velocities, Eddington ratio, luminosity, and black hole mass. Larger samples will also facilitate further study of the potential limits of SED hardness via examination of the He II emission line.

Finding more potential connections between outflows in emission and absorption will become the cornerstone work for future James Webb Space Telescope (JWST) and Atacama Large Millimeter/submillimeter Array (ALMA) proposals to study [C II] and O III] emission and observe the host galaxies of EHVO quasars.

We thank Paul Hewett, Gordon Richards, and Pat Hall for their insightful comments. P.R.H. acknowledges support from the National Science Foundation Astronomy & Astrophysics (award 2107960). A.L.R. acknowledges support from UKRI (grant code: MR/T020989/1).

For the purpose of open access the author has applied a Creative Commons Attribution (CC BY) licence to any Author Accepted Manuscript version arising from this submission.

Funding for SDSS-III has been provided by the Alfred P. Sloan Foundation, the Participating Institutions, the National Science Foundation, and the U.S. Department of Energy Office of Science. The SDSS-III website is <http://www.sdss3.org/>. The SDSS-III is managed by the Astrophysical Research Consortium for the Participating Institutions of the SDSS-III Collaboration, including the University of Arizona, the Brazilian Participation Group, Brookhaven National Laboratory, Carnegie Mellon University, the University of Florida, the French Participation Group, the German Participation Group, Harvard University, the Instituto de Astrofísica de Canarias, the Michigan State/Notre Dame/JINA Participation Group, Johns Hopkins University, Lawrence Berkeley National Laboratory, the Max Planck Institute for Astrophysics, the Max Planck Institute for Extraterrestrial Physics, New Mexico State University, New York University, Ohio State University, Pennsylvania State University, the University of Portsmouth, Princeton University, the Spanish Participation Group, the University of Tokyo, the University of Utah, Vanderbilt University, the University of Virginia, the University of Washington, and Yale University.

Software: astropy (Astropy Collaboration et al. 2013), C IV distance (McCaffrey & Richards 2021).

ORCID iDs

Paola Rodríguez Hidalgo  <https://orcid.org/0000-0003-0677-785X>

Amy L. Rankine  <https://orcid.org/0000-0002-2091-1966>

References

- Allen, J. T., Hewett, P. C., Richardson, C. T., Ferland, G. J., & Baldwin, J. A. 2013, *MNRAS*, **430**, 3510
- Astropy Collaboration, Robitaille, T. P., Tollerud, E. J., et al. 2013, *A&A*, **558**, A33
- Bahcall, J. N., Kirhakos, S., Saxe, D. H., & Schneider, D. P. 1997, *ApJ*, **479**, 642
- Baskin, A., Laor, A., & Hamann, F. 2013, *MNRAS*, **432**, 1525
- Baskin, A., Laor, A., & Hamann, F. 2015, *MNRAS*, **449**, 1593
- Bischetti, M., Feruglio, C., D’Odorico, V., et al. 2022, *Natur*, **605**, 244
- Casebeer, D. A., Leighly, K. M., & Baron, E. 2006, *ApJ*, **637**, 157
- Chartas, G., Brandt, W. N., Gallagher, S. C., & Garmire, G. P. 2002, *ApJ*, **579**, 169
- Chen, C., Hamann, F., & Ma, B. 2021, *ApJ*, **909**, 208
- Coatman, L., Hewett, P. C., Banerji, M., et al. 2017, *MNRAS*, **465**, 2120
- Crenshaw, D. M., Kraemer, S. B., Bogges, A., et al. 1999, *ApJ*, **516**, 750
- Di Matteo, T., Springel, V., & Hernquist, L. 2005, *Natur*, **433**, 604
- Dunn, J. P., Crenshaw, D. M., Kraemer, S. B., & Tripp, M. L. 2008, *AJ*, **136**, 1201
- Filiz, Ak, N., Brandt, W. N., Hall, P. B., et al. 2012, *ApJ*, **757**, 114
- Ganguly, R., & Brotherton, M. S. 2008, *ApJ*, **672**, 102
- Gebhardt, K., Bender, R., Bower, G., et al. 2000, *ApJL*, **539**, L13
- Gibson, R. R., Jiang, L., Brandt, W. N., et al. 2009, *ApJ*, **692**, 758
- Giustini, M., & Proga, D. 2019, *A&A*, **630**, A94
- Hamann, F., Barlow, T. A., Junkkari, V., & Burbidge, E. M. 1997, *ApJ*, **478**, 80
- Hamann, F., Kaplan, K. F., Hidalgo, P. R., Prochaska, J. X., & Herbert-Fort, S. 2008, *MNRAS*, **391**, L39
- Hamann, F., & Sabra, B. 2004, in ASP Conf. Ser., 311, AGN Physics with the Sloan Digital Sky Survey, ed. G. T. Richards & P. B. Hall (San Francisco, CA: ASP), 203
- Hopkins, P. F., Hernquist, L., Cox, T. J., et al. 2006, *ApJS*, **163**, 1
- Jannuzi, B. T., Hartig, G. F., Kirhakos, S., et al. 1996, *ApJL*, **470**, L11
- Komossa, S., Xu, D., Fuhrmann, L., et al. 2015, *A&A*, **574**, A121
- Leighly, K. M. 2004, *ApJ*, **611**, 125
- Lyke, B. W., Higley, A. N., McLane, J. N., et al. 2020, *ApJS*, **250**, 8
- Lynden-Bell, D. 1969, *Natur*, **223**, 690
- Marziani, P., Negrete, C. A., Dultzin, D., et al. 2017, *FrASS*, **4**, 16
- McCaffrey, T. V., & Richards, G. T. 2021, CIV_Distance, doi:10.17918/CIVdistance
- Merritt, D., & Ferrarese, L. 2001, *ApJ*, **547**, 140
- Nestor, D., Hamann, F., & Hidalgo, P. R. 2008, *MNRAS*, **386**, 2055
- Pâris, I., Petitjean, P., Aubourg, É., et al. 2012, *A&A*, **548**, A66
- Pâris, I., Petitjean, P., Aubourg, É., et al. 2018, *A&A*, **613**, A51
- Rankine, A. L., Hewett, P. C., Banerji, M., & Richards, G. T. 2020, *MNRAS*, **492**, A553
- Reeves, J. N., O’Brien, P. T., & Ward, M. J. 2003, *ApJL*, **593**, L65
- Reichard, T. A., Richards, G. T., Hall, P. B., et al. 2003, *AJ*, **126**, 2594
- Richards, G. T., Kruczek, N. E., Gallagher, S. C., et al. 2011, *AJ*, **141**, 167
- Richards, G. T., McCaffrey, T. V., Kimball, A., et al. 2021, *AJ*, **162**, 270
- Rivera, A. B., Richards, G. T., Gallagher, S. C., et al. 2022, *ApJ*, **931**, 154
- Rivera, A. B., Richards, G. T., Hewett, P. C., & Rankine, A. L. 2020, *ApJ*, **899**, 96
- Rodríguez Hidalgo, P., Hamann, F., & Hall, P. 2011, *MNRAS*, **411**, 247
- Rodríguez Hidalgo, P., Khatri, A. M., Hall, P. B., et al. 2020, *ApJ*, **896**, 151
- Rogerson, J. A., Hall, P. B., Rodríguez Hidalgo, P., et al. 2016, *MNRAS*, **457**, 405
- Ross, N. P., McGreer, I. D., White, M., et al. 2013, *ApJ*, **773**, 14
- Scannapieco, E., & Oh, S. P. 2004, *ApJ*, **608**, 62
- Schmidt, M., Schneider, D. P., & Gunn, J. E. 1995, *AJ*, **110**, 68
- Shen, Y., Brandt, W. N., Dawson, K. S., et al. 2015, *ApJS*, **216**, 4
- Shen, Y., Richards, G. T., Strauss, M. A., et al. 2011, *ApJS*, **194**, 45
- Silk, J., & Rees, M. J. 1998, *A&A*, **331**, L1
- Springel, V., Di Matteo, T., & Hernquist, L. 2005, *ApJL*, **620**, L79
- Tombesi, F., Cappi, M., Reeves, J. N., et al. 2010, *A&A*, **521**, A57
- Tremaine, S., Gebhardt, K., Bender, R., et al. 2002, *ApJ*, **574**, 740
- Trump, J. R., Hall, P. B., Reichard, T. A., et al. 2006, *ApJS*, **165**, 1
- Wang, F., Yang, J., Fan, X., et al. 2018, *ApJL*, **869**, L9
- Wang, F., Yang, J., Fan, X., et al. 2021, *ApJL*, **907**, L1
- Weymann, R. J., Morris, S. L., Foltz, C. B., & Hewett, P. C. 1991, *ApJ*, **373**, 23
- Wu, Q., & Shen, Y. 2022, A Catalog of Quasar Properties from Sloan Digital Sky Survey Data Release 16, arXiv:2209.03987